



Qbasis i Trend INDEX

ISIN: AT0000A11459

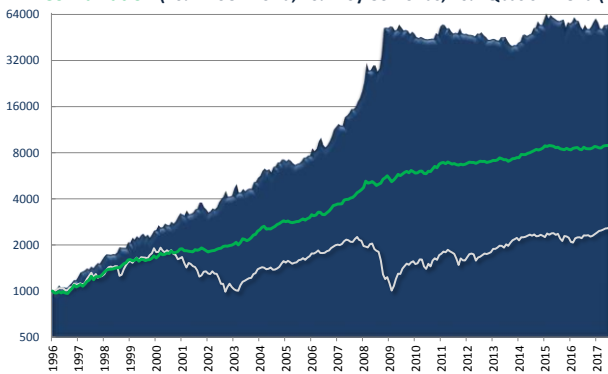
Qbasis i Trend Index shows the performance of Qbasis' i Trend program. To generate the characteristics of a trend follower, a breakout strategy is employed ("Trend"), which has the ability to **recognize trends at a very early stage**.

"V"-Protection was introduced as an overlay in 2013 to mitigate the negative effects of trend breaks on the overall performance. In 2016, "V"-Protection was combined with the classic trend following part via **SmartSwitch**, which allows the strategy to autonomously change weightings based on volatility levels, making the overall strategy more adaptive and thus more profitable in the process. In periods of declining volatility and inexplicit trends, the allocation switches towards "V"-Protection, enabling the positive returns of this component to dominate the overall performance of the fund.

The Intraday strategy helps to maximize returns in times of **increasing market volatility**. The "Vol"-Protection overlay performs well in periods of declining volatility, which are a non-optimal environment for most of our other strategy parts.

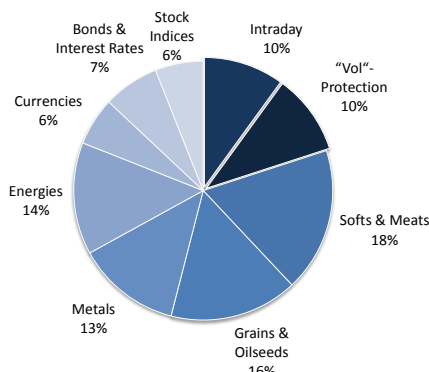
The aim of the strategies is to generate **negatively correlated returns** to stocks and Hedge Fund Indices, thus making it an extremely effective portfolio diversification instrument.

PERFORMANCE CHART: Qbasis i Trend INDEX vs. MSCI World INDEX vs. Combination (40% MSCI World, 40% 10y US-Bonds, 20% Qbasis i Trend (x1,5)*

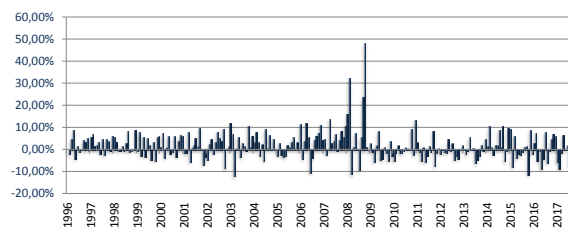


Qbasis i Trend INDEX ALLOCATION

100+ markets, constantly diversified, overweight in commodities



DISTRIBUTION OF MONTHLY RETURNS*



12 month returns

07/2016 - 07/2017	-6,20%	07/2014 - 07/2015	11,25%
07/2015 - 07/2016	-5,35%	07/2013 - 07/2014	21,20%
		07/2012 - 07/2013	-12,33%

1996	19,50%	1999	18,83%	2003	30,71%
1997	35,94%	2000	29,62%	2004	31,18%
1998	30,38%	2001	5,90%	2005	6,48%
		2002	22,99%	2006	53,05%

Qbasis i Trend INDEX RETURNS (gross)*

	Jan	Feb	Mar	Apr	May	Jun	Jul	Aug	Sep	Oct	Nov	Dec	Total
2007	4,53%	-2,32%	-0,24%	13,44%	2,57%	3,59%	6,54%	-0,43%	3,87%	8,12%	5,41%	10,50%	70,38%
2008	15,73%	32,03%	-10,99%	0,82%	7,03%	0,14%	-9,04%	5,22%	23,32%	47,98%	0,84%	-0,72%	156,90%
2009	2,49%	-0,93%	-5,28%	1,53%	7,91%	-4,50%	-4,34%	0,92%	-1,20%	-5,00%	3,78%	-2,88%	-8,13%
2010	-4,96%	-1,25%	1,54%	-1,47%	-1,55%	-0,43%	0,59%	0,27%	-0,06%	8,84%	-2,35%	13,12%	11,50%
2011	2,97%	-1,16%	-4,93%	0,80%	-5,25%	-2,85%	1,29%	-0,94%	8,10%	-7,23%	-1,17%	0,53%	-10,29%
2012	-1,78%	0,16%	-0,89%	-1,54%	4,36%	-0,49%	2,45%	-4,48%	-2,58%	-4,07%	-0,09%	1,59%	-7,50%
2013	-0,06%	-2,06%	-0,38%	5,26%	-0,08%	0,43%	-6,02%	-4,49%	-2,85%	1,69%	-0,52%	4,33%	-5,23%
2014	1,37%	10,26%	0,84%	-2,14%	1,84%	1,63%	8,41%	0,74%	10,18%	-5,16%	-0,39%	9,27%	41,80%
2015	9,09%	-7,84%	5,87%	-3,74%	-1,90%	-2,49%	-0,93%	1,07%	1,28%	-11,48%	8,47%	-1,86%	-6,34%
2016	2,54%	7,21%	-5,14%	-0,42%	-8,47%	-3,92%	7,45%	-5,81%	-0,58%	4,33%	6,66%	5,58%	7,96%
2017	-5,61%	-8,70%	-1,28%	6,44%	-0,20%	1,51%	-7,06%						-14,74%

STATISTICS*

Ø monthly return	1,70%	Sortino Ratio (2%)	1,83
Ø annual return	20,57%	Monthly mean / std. dev.	0,28
Best month	47,98%	Correlation S&P 500	-0,38
Worst month	-12,03%	Correlation Hang Seng	-0,22
Total return	5017,44%	Correlation Bonds (REX)	0,09
Ann. standard deviation	21,06%	Correlation DJCS HF Index	-0,21
Ann. downside deviation	10,15%	Correlation GSCI	-0,22
MTH. Value-at-risk	-12,47%	Correlation CTAs	0,54

Qbasis Invest GmbH

City Tower
 Brückenkopfgasse 1 / 5
 8010 Graz / Austria
 +43 316 225266
 www.qbasisinvest.com
 office@qbasisinvest.com

Germany's
Hedge Fund Award

Alternative
Investments Award

alternative
investments
award

Qbasis Fund Mgmt (MF
Trend Plus)
BarclayHedge Top 20

Top Performing CTA
Fast Five Years
Ranked By
Compound Annual Return
5 Years Ending Mar 2012

This factsheet has been prepared solely for informational purposes. It is neither an offer nor is it in any way intended to replace a personal consultation with an expert. No information in this factsheet is designed for U.S. citizens or permanent U.S. residents. The charts, graphs and descriptions of the history and performance contained herein are not representations that such history or performance will continue in the future or that any investment scenario or performance will even be similar to such chart, graph or description. This investment is considered highly speculative. There can be no guarantee that the actual investments match the projected or historical returns. A loss of the entire amount invested cannot be precluded. All information herein has been meticulously checked for accuracy. Nobody can be held liable for possible typographical errors or misprints. All profits gained from this investment are subject to the respective national taxation. The Qbasis i Trend Index is a non-investable index listed on the Vienna Stock Exchange. * The performance of the Qbasis i Trend Index before Apr 2007 is based on hypothetical calculations of the strategy excluding management and performance fees. Since 2007 the performance numbers of the Qbasis i Trend Index shows the real trading results of the strategy inside an audited fund excluding management and performance fees (gross results). Since March 2013 the performance is calculated on a daily basis by Deutsche Bank (dbSelect platform).